

# The most desirable address in Angamaly



PREMIUM RESIDENTIAL & COMMERCIAL SPACES



LUXURY,  
IS THE ONLY OTHER NAME  
FOR  
**223ChurchStreet**  
*BY PROVIDENCE*



Here, every detail has been poured into, by expert hands not overlooking any aspect, significant or otherwise.

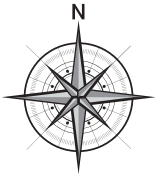
Providence Life space has over the years, acquired expertise and experience in turning out premium products that are most modern and contemporary in style with every inch designed for ultimate utility.

223 Church Street by Providence is another such offering to the discerning, that when belonged makes a statement, a lifestyle statement.

The project is located in the heart of the town, in the best of residential areas of Angamaly, with easy access to all utilities and conveniences like schools, hospitals, super markets, entertainment centres, Railway station, Airport, Bus station etc.

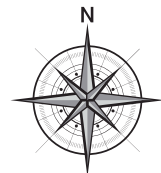
223 Church Street by Providence, for those who've been there, done that.



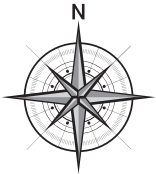


TYPE - A

SBU : 1565 sqft



**TYPE - B**  
 SBU : 1638 sqft



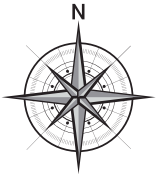
TYPE - C

SBU : 1625 sqft





TYPE - D  
SBU : 1354 sqft



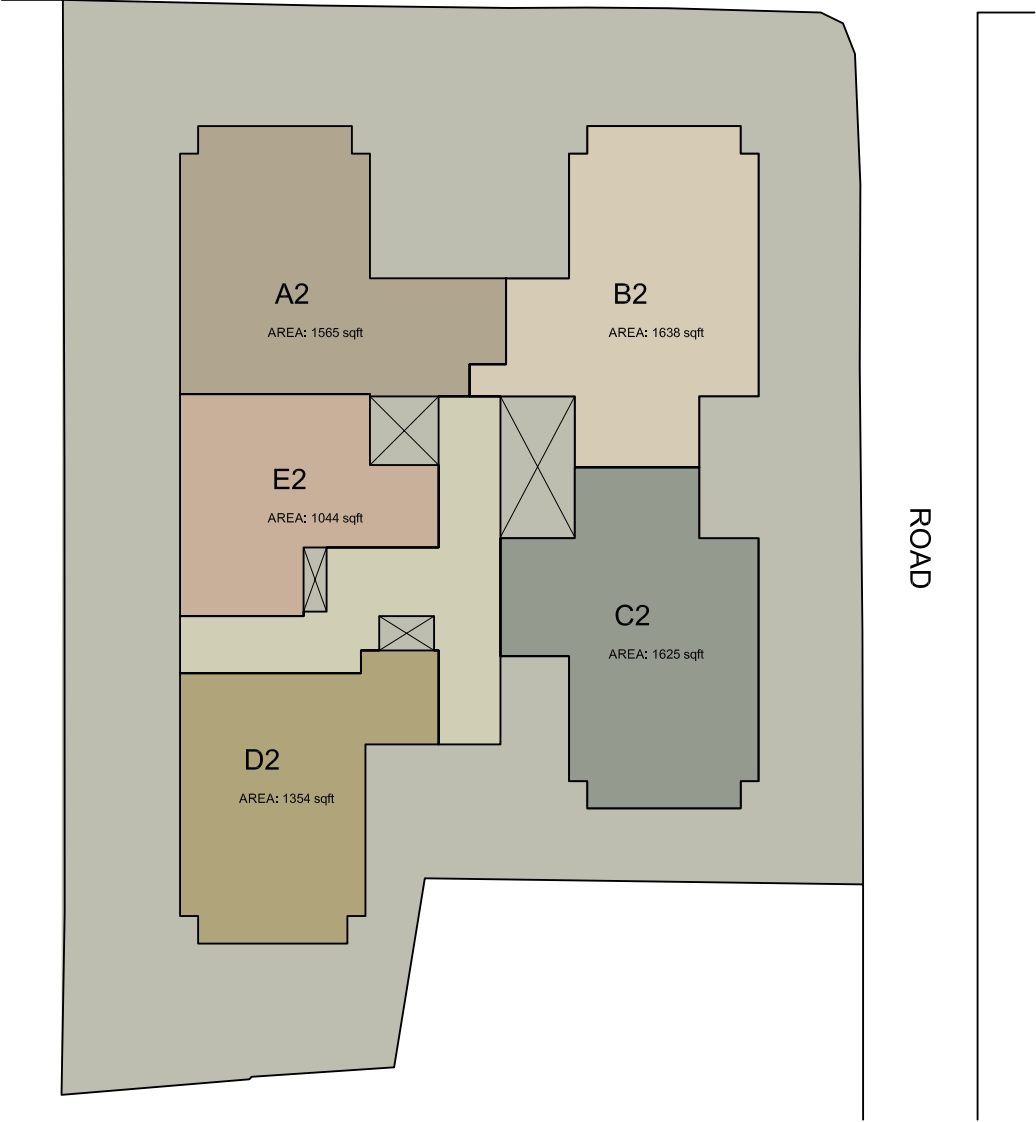
TYPE - E

SBU : 1044 sqft





MAIN ROAD



TYPICAL FLOOR

## Common Amenities



CHILDREN'S PLAY AREA



GYMNASIUM



PARTY HALL



INDOOR GAMES



POWER BACK-UP

## Premium Specifications

**Structure** ■ Seismic Zone II compliant structure ■ RCC framed structure. **Walls** ■ Wall masonry using Concrete Solid Blocks. **Painting/Polishing** ■ Interior : Two coat Emulsion painting over two coat putty ■ Exterior : Weather proof paint ■ Enamel paint for MS grill. **Flooring** ■ Hall / Bedroom / Kitchen – Premium Vitrified tiles from Kajaria or Nitco or equivalent ■ Bath / Balcony – Premium Anti skid ceramic tiles from Kajaria or Nitco or equivalent. **Bathroom/Toilets** ■ EWC – Wall hung with concealed flush tank from Kajaria or equivalent ■ Wash Basin – in dining, Table top model from Kajaria or equivalent ■ Wash Basin – in toilets, with half pedestal from Kajaria or equivalent ■ Premium quality mixers from Kajaria or equivalent ■ Bathroom ceramic tiles dado up to 7 ft height from Kajaria or equivalent. **Main Door** ■ Elegantly designed and polished door and frame in Teak wood ■ SS / Brass hardware. **Other Doors** ■ Jamb & Shutter – Engineered doors in HDF wrapped with laminate from Jacksons or equivalent ■ Toilet doors – Engineered doors in HDF wrapped with laminate from Jacksons or equivalent. **Windows / Ventilators** ■ Large UPVC windows with plain glass ■ UPVC ventilators with pinhead glass in toilets. **Electrical** ■ Wires of Finolex / Havells or equivalent ■ Elegant designer modular electrical switches of Legrand or equivalent. **Plumbing** ■ All water supply lines are of UPVC / CPVC of Finolex or Supreme or equivalent ■ Sewer lines will be of UPVC / PVC of Finolex or Supreme or equivalent. **Telephone/TV** ■ Telephone and TV points in Living Room and Master Bedroom. **Air Conditioning** ■ AC points in all bedrooms.



 THE  
GREEN  
TERRACES  
Koratty



Short Stays  
Angamaly



ONE STREET  
Angamaly



the tall place  
Angamaly



Crest  
Bangalore



www.providenceprojects.com



## PROVIDENCE LIFESPACE PVT. LTD.

#2-24, 2nd Floor, Penta Tower, Kaloor, Kochi - 682 017, E-mail: info@providenceprojects.com

#27, AA Towers, MSR Main Road, Mathikere, Bangalore - 560 054

+91 9961596459, +91 9845499078